



# PLAY BOX NURSERY

The place where children  
learn to Play and play to learn

Play Box Nursery, Third Avenue  
The Pensnett Estate, Kingswinford

DY6 7XG

01384 835535

[www.playboxdaynursery.com](http://www.playboxdaynursery.com)



## A few words from Debbie, our owner:

As the owner of Play Box Nursery & Play Box Pre School, I appreciate only too well how difficult it can be to find specialised care for children. As a parent myself, I have spent a long time researching the needs of both parents and children and feel that we can offer the most flexible and friendly day care arrangements in the area.



In support of this, our qualified Managers are able to offer a vast and varied array of skill to different age groups with they and their staff will ensure are utilised to provide the best and most appropriate care for your child.

Our staff are recruited not only on the basis of their qualifications, professionalism and experience, but also their personal qualities. We look for enthusiasm, dedication and a genuine love of children.



Play Box Nursery is uniquely positioned within The Pensnett Estate, Kingswinford which provides us with the benefit of 24 hours a day security. Our single storey premises have been specifically designed to our requirements for Play Box Nursery and provide a light, airy and welcoming environment for children of all ages.

As you would expect, we have placed a great deal of importance on the safety and well being of children in our care and our premises are protected by the most up to date Fire and Safety systems and has central heating throughout. We have a CCTV security system throughout the nursery, operating in all children rooms. Naturally, this does not include the bathroom or any of the baby changes for safeguarding reasons.

The Nursery has six main rooms, all of which are well equipped to accommodate differing age groups and each has a wide variety of age appropriate equipment.

Unlike many other nurseries, we have provided our facilities with the choice of extended hours from 7 am to 6 pm or varying periods in-between. Places can be booked on a full or part time basis and we will be pleased to accommodate those who only require nursery care to cover shift patterns with prior arrangements.

In addition, for the older children we can provide both pre and after school care for those attending Blanford Mere Primary School. Transport will be provided between the Nursery and school in modern fully insured vehicles. We also provide care for any children aged four to eleven years during all school holidays and inset days.



We have outlined below some of our policies. Full details on all Nursery policies are available on request. All policies are reviewed regularly and updated as required.

#### Equal Opportunities Policy

Equal opportunity is given to children of any ethnic origin, religion or to those who may bear a physical disadvantage. Care will be taken to meet your child's religious, racial and cultural needs alongside their basic everyday requirements. Children will be encouraged to treat all races and creeds as equal and this is reflected in our wall displays, craft work, books, dressing up clothes and cookery. We provide a varied educational programme and a variety of suitable toys to encourage all children to develop at their natural rate.



#### Child Protection Policy

Play Box Nursery follows all aspects of The Children's Act and complies with all Child Protection procedures. Most bumps and bruises are accidental. If your child has an accident at home, please inform the nursery staff. Likewise, we will inform you if your child has had an accident or injury at Nursery.

#### Behaviour Policy

Children occasionally may bump into each other or behave unkindly towards others. If this occurs, it will be recorded on an incident sheet as necessary, and the parents/carers will be informed accordingly.

Smacking, rough handling or oppressive practices by staff are not tolerated at Play Box. In addition, any unacceptable behaviour by children will be dealt with in consultation with parents.

Children will be encouraged to be kind and thoughtful to others, to value the toys and environment and to listen to simple instructions and do their best to comply.



#### Non-Smoking, Drugs and Alcohol Policy

Play Box Nursery operates a strict non-smoking policy. At no time is smoking allowed on the premises or grounds. We would not admit any member of the public or staff known to be under the influence of drugs or alcohol to ensure safety of the children and staff.

### Medication Policy

We are able to give medicines that have been prescribed or advised by a doctor, including Calpol or similar products and on each occasion appropriate forms must be completed to ensure correct understanding of the prescription and dosage requirements. Children needing constant or long-term medication such as inhalers required for Asthma will be required to discuss a Health Care Plan with a senior member of staff. Details for this plan will need to be obtained from a Health Professional.



If your child has a contagious illness or condition, we ask that they do not attend Nursery.

### Fire Policy

Regular fire drills are held to enable staff and children to practice our procedure so that children can be evacuated as quickly and calmly as possible. A record of all fire drills and equipment checks is held on site.

### Access to Information Policy

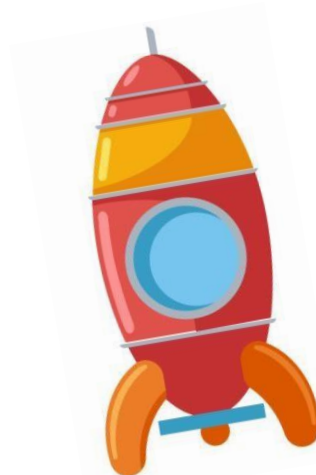
Parents and guardians have the right to access information concerning their child at any time, simply by making an appointment with a member of staff.

All nursery policies and procedures are available to all parents/carers to view at any time.



# Our Tariff for 2025

Full Time	£325.00 per week
Full Day Care	£74.00 per day
Half Day Care (5 hours)	£42.00 per session



## Before or After School Care & Holiday Club

£5.00 per hour, lunch £3.00 if not bringing own packed food.

If you are accessing the funded places, meals will be charged at £2.00 for breakfast or tea, and £4.00 per lunch. You are of course welcome to instead bring a packed lunch, at no cost.

Opening hours are 7.00 am to 6.00 pm weekdays.

A place can be reserved on receipt of a deposit of Fifty Pounds.

Fees are payable on the first day that your child attends.

Payments are then to be made by Standing Order or Direct Debit at the beginning of each month and will be annualised to enable the same payments to be made each month unless there is an agreed alteration to the Contract.

Full time and part time fees include the provision of regular meals throughout the day as detailed below:

Breakfast 7.45 – 8.30 am

Snack time 10.00 am

Cooked lunch 12.00 pm

Drink and Snack 2.30 pm

Tea 4.30 pm



Water, milk and sugar free juice are available for all children all day.